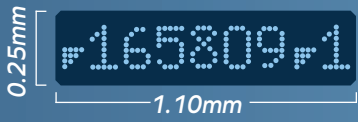
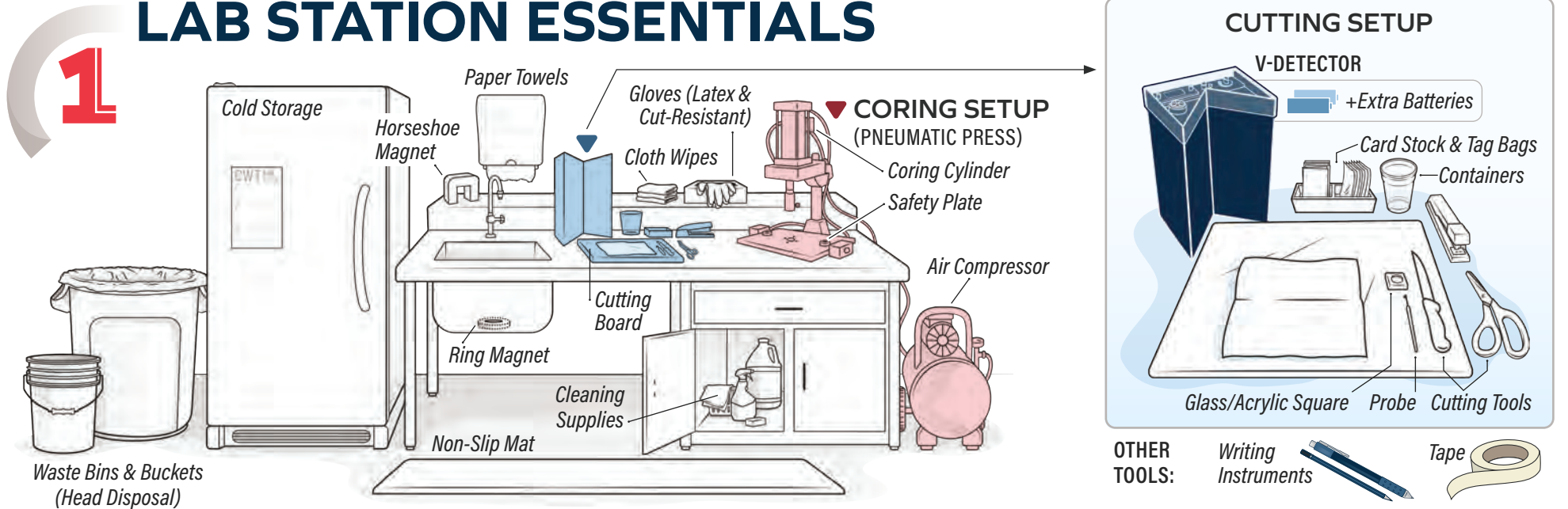


CWT Coring Lab Guide



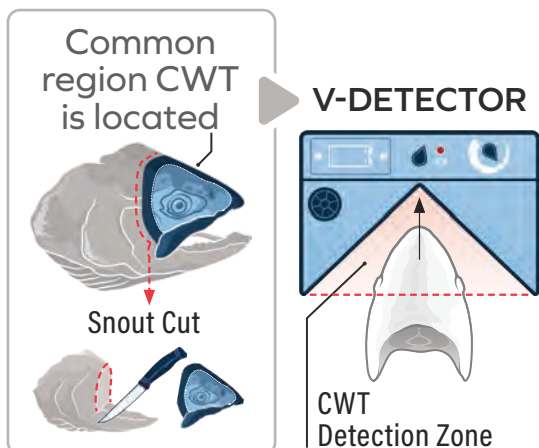
A **CODED WIRE TAG (CWT)** is a small piece of wire etched with a code and injected into snouts of juvenile salmon and steelhead

LAB STATION ESSENTIALS



ISOLATE

2 Confirm presence of CWT with V-detector

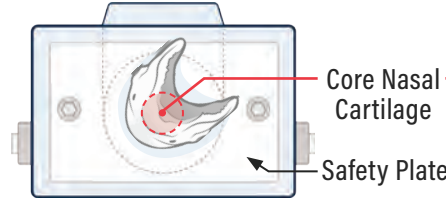


Isolate CWT by coring and cutting

CORING PREP & POSITION

- 1 Frozen & clean
- 2 Lower jaw removed
- 3 Place on safety plate under coring cylinder

NOTE: Variation in head/snout size may effect placement under corer and the overall safety of operation

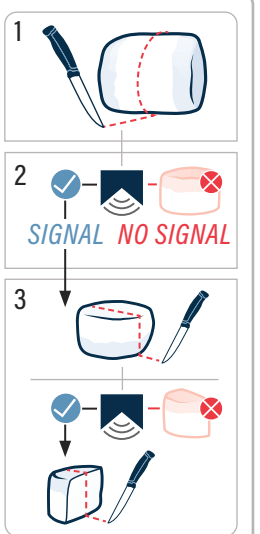


Keep hands clear of corer while in use

Only divide tissue that produces a signal

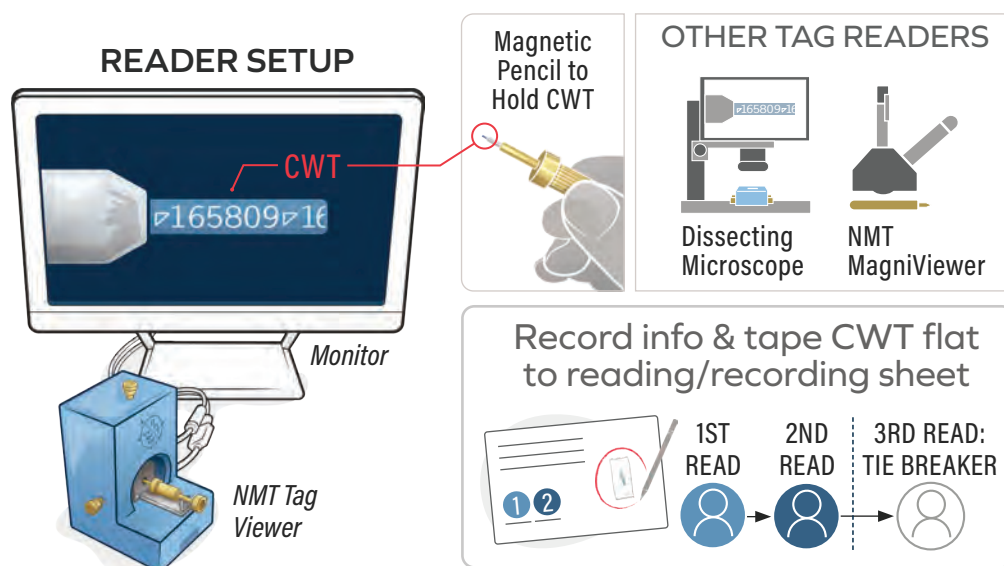
ISOLATE CWT FROM CORE

- 1 Cut core in halves
- 2 Run each piece by V-detector
- 3 Repeat cutting & scanning until CWT is isolated



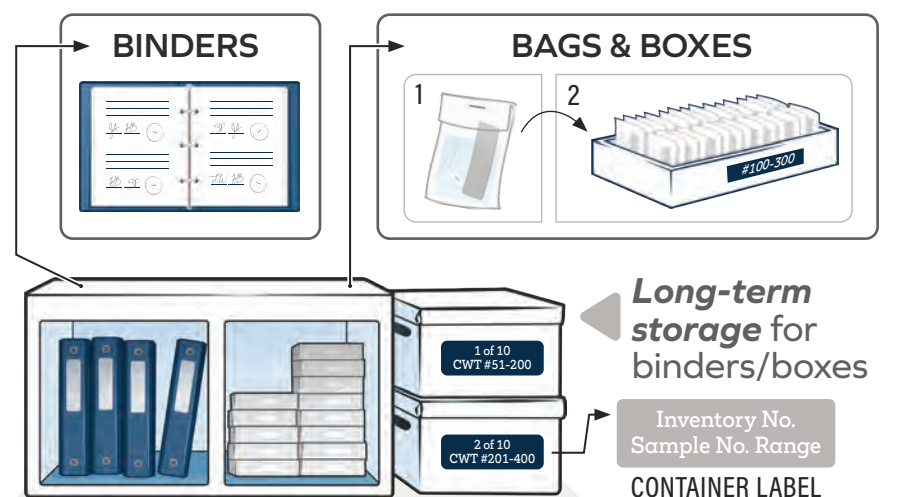
READ & RECORD

3 Identify CWT code and attach CWT to reading/recording sheet



STORE

4 Sort and file reading/recording sheets with attached CWT



For more detail, scan code for CWT Recommended Procedures Documents

Pacific States Marine Fisheries Commission © 2024



Clean and organize the lab workspace before and after CWT extraction.